



# Case Study

 OpenExchange



click to watch  
their story

# The brief



## London Team

55 people

## Office Location

Link House,  
Farringdon

## Company Mission

To create meetings that matter, and that lead to action on the other side.

The Open Exchange team in London were without an office after letting go of a short-term lease during the pandemic. But after growing from 5 to 55 people, they began looking for a new space to bring their team together in.

Being a virtual meetings company, they had bespoke AV requirements as well as a need to create a space that they were able to work alongside clients in on the day of complex events and projects.

After finding the space at Link House in Farringdon, they worked with the Kitt design team to create the perfect 'events centre', with a studio and acoustics at the top of the priorities list.

Open Exchange viewed a number of workspace options, but opted for Kitt because they wanted someone to think through the design and fit-out of the space for them, and the day-to-day office operation.

## Team wishlist

- Collaborative zones
- Brand touchpoints
- Elevated client experience
- Bespoke AV requirements
- Acoustics

**“Our clients will come in and be with us on the day of a particularly complicated event, so we needed a space that was client-friendly and appropriate for that.”**



**Ben Burnside**  
Head of IR, Open Exchange











**“Kitt are the office experts. They think through the details of the office space on our behalf and take all of that weight off of our shoulders.”**



**Ben Burnside**

Head of IR, Open Exchange

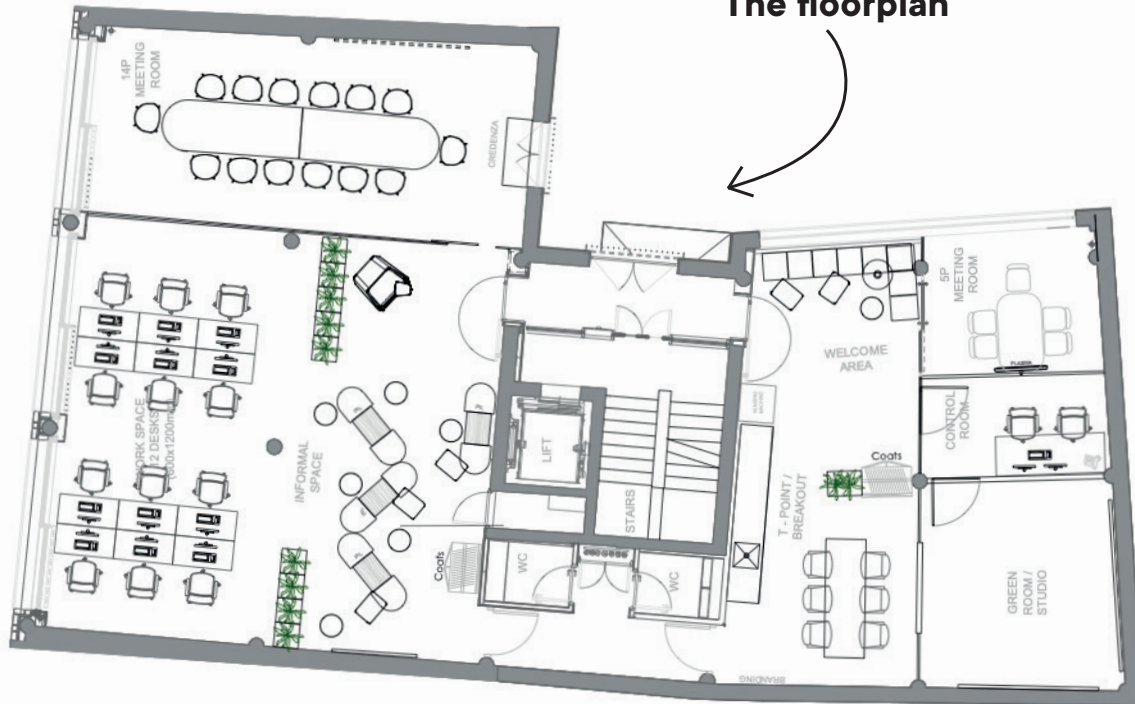


# The **design** process

## Design preferences

- High acoustic features in all areas
- Multifunctional waiting area
- Branding wall
- Plenty of planting

The floorplan



The design expert



**Patrice Antwi**  
Interior Designer at Kitt



**“The design process was really fun. We got to view lots of different solutions and potentials and really try them out before deciding on what we wanted in the space itself.”**



**Ben Burnside**  
Head of IR, Open Exchange



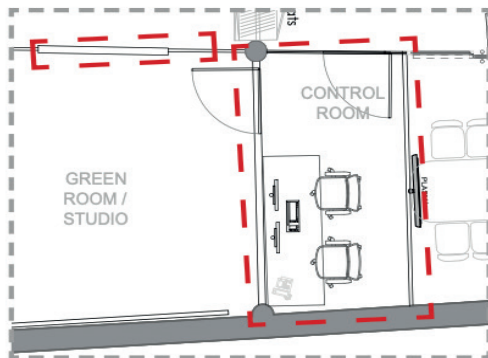




# The studio



The moss wall



The floorplan



**“We don’t refer to it as our office, we refer to it as our events centre because we’re really bringing clients into this space and bringing our team together, and that’s an important part of our culture.”**



**Ben Burnside**  
Head of IR, Open Exchange





**“Kitt has definitely made my job easier. It’s just little things I don’t have to think about because they’re always being done in the background.”**



**Joslin Morrison**  
Office Administrator, Open Exchange









**“The office feels very open and it blends an industrial feel with a homely feel, with a very tech-forward feel, which is the ethos of our company.”**



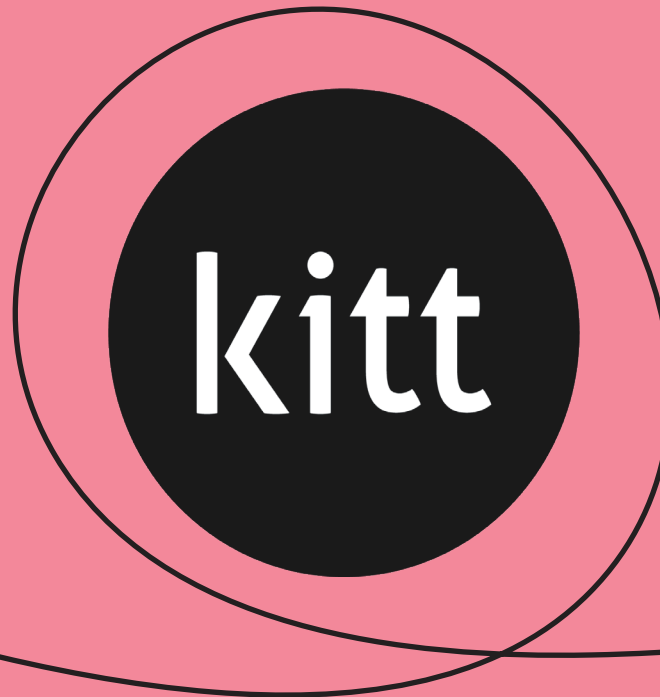
**Ben Burnside**  
Head of IR, Open Exchange

## The Space Partner



**Vanessa Silva**  
Space Partner at Kitt





**Ready to start thriving?**

Contact us:

**[hello@kittoffices.com](mailto:hello@kittoffices.com)**

**020 3488 3957**