



 CAPITALONTAP

## Case Study

 CAPITALONTAP

# The brief



## Day One Team Size

90 desks

## Office Location

Tea Building, Shoreditch

## Company Mission

To become the best small business credit card in the world

Capital On Tap were looking for a large self-contained space for their team in the heart of Shoreditch.

Culture was a high priority for them and they wanted areas for their dev teams to do daily stand-ups without distraction, a range of collaboration spaces, meeting

rooms for groups to come together and also a beautiful outdoor space to relax and socialise.

With no expertise in navigating the world of offices, they were overwhelmed at the options available and choices to make and wondered how they could ever tick off all of their many specific requirements.

They chose Kitt as they knew they didn't want to manage the space themselves, but still wanted to get creative and make it their own.

**'A big part of the Capital On Tap culture is people and you need that office to bring everyone together.'**



**Philippa Munitz**  
Head of People, Capital On Tap



## Team wishlist

- Shoreditch location
- Whole team on one floor
- Dog friendly
- Outdoor space
- Plenty of meeting rooms and collaboration/social space
- Beer tap







***‘We chose Kitt as we could make the office our own with things like a beer tap and someone dealing with our coffee and cleaning so that we didn’t have to worry...’***



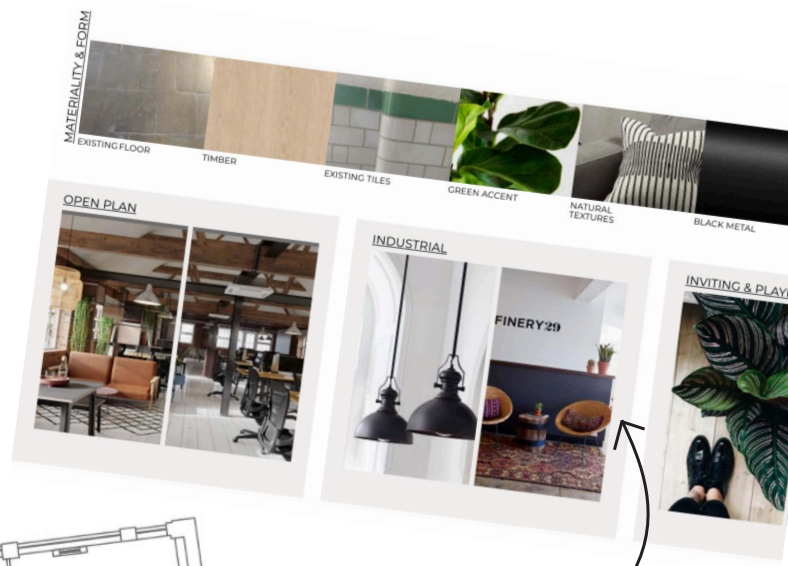
**Philippa Munitz**

Head of People, Capital On Tap

# The **design** process

## Design preferences

- Open plan layout
- Industrial look and feel
- Collaborative areas
- Plenty of planting



The moodboard

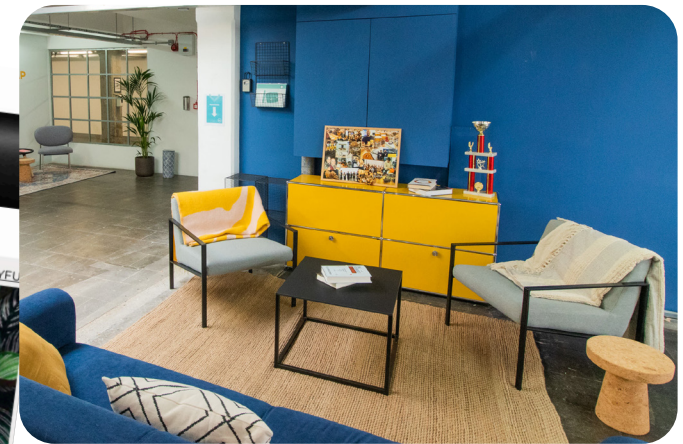
The floorplan



The design expert



**Gabrielle Bailey**  
Senior Interior Designer at Kitt



***'It was fun trying to figure out what our style was and making it feel like our office. It was like Pinterest in real life - really fun!'***



**Philippa Munitz**  
Head of People, Capital On Tap



# The fit-out



The terrace



Breakout area



***'It's all those little extra details and thoughtfulness that have gone into it. There's even a little dog corner, they just made it really special to us.'***



**Philippa Munitz**  
Head of People, Capital On Tap



***‘Now, we’ve got a ton of different collaboration stations, whether that’s the kitchen to eat together, in a meeting room, whiteboard area, on the terrace or the coffee shop downstairs.’***



**Philippa Munitz**

Head of People, Capital On Tap



# Working with the Kitt team

## The Space Partner



**Zoe Brown**  
Space Partner at Kitt

***'When there's been issues with heating, its been sorted. When we needed a new beer keg, it's been ordered.'***



**Philippa Munitz**  
Head of People, Capital On Tap

***'It's not like a tickbox at Kitt, they very much care about you and want you to love the space, always making it special for you.'***



**Philippa Munitz**  
Head of People, Capital On Tap



# Ready to start thriving?

Contact us:

**[hello@kittoffices.com](mailto:hello@kittoffices.com)**

020 3488 3957